



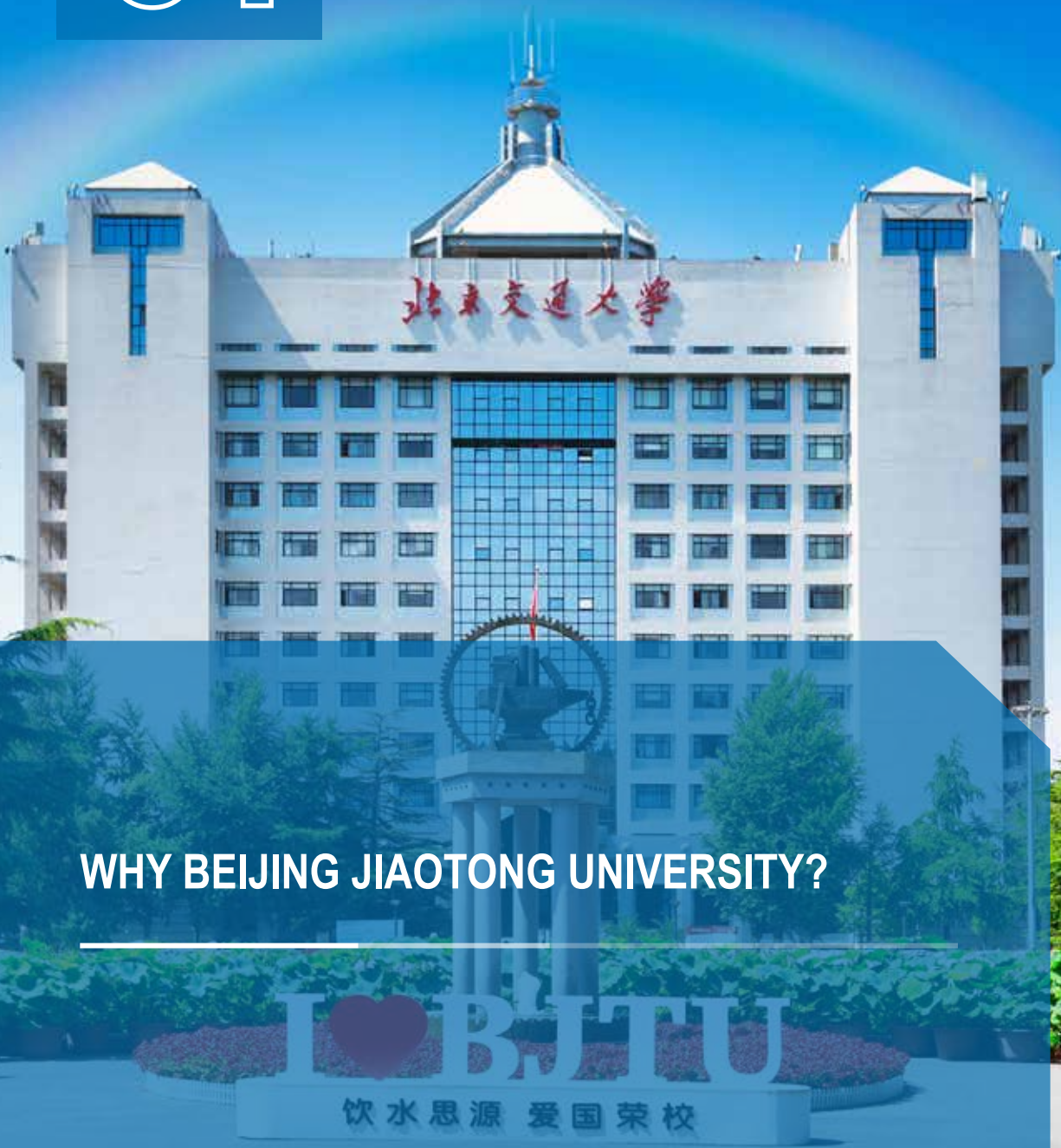
# 2022

BEIJING JIAOTONG  
UNIVERSITY

# ADMISSION PROSPECTUS



# 01



## WHY BEIJING JIAOTONG UNIVERSITY?



**67 years**

in the cultivation of International Students



**One of the first batch**

of universities being credited by CEAIE for meeting the quality standard of international education for higher education institutions



**Over 1000 International students**

from 102 countries studied at BJTU in 2021

## >>> RANKING



World **800-1000**  
Mainland China **48**



World **401-500**  
Mainland China **40**



World **587**  
Mainland China **47**

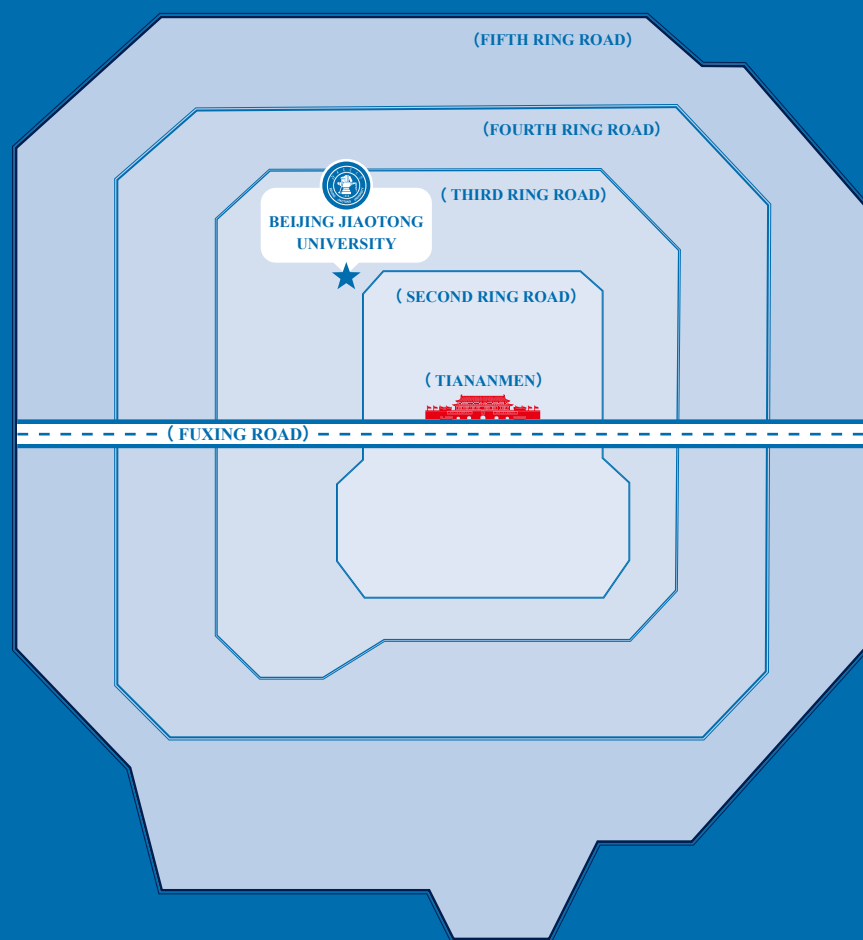


World **1001-1200**  
Asia **201-250**

## >>> LOCATION



Beijing Campus is located next to the core area of the capital, renowned for its history and student-friendly environment.



Map of Beijing (within the 5th Ring Road)



## A DYNAMIC UNIVERSITY, FEATURED IN TRAFFIC AND TRANSPORTATION

- ◆ A national **key university** under the direct administration of the Ministry of Education of the People's Republic of China
- ◆ Jointly supported by the Ministry of Education, Ministry of Transport, the China Railway Corporation and Beijing Municipal Government
- ◆ Selected into the 'Double First-Class' National Initiative. Focus on building '**Smart Transportation**' as a world-class discipline
- ◆ One of the first universities selected into the "**National 211 Project**" and the "985 Innovative Platforms for Key Disciplines Project"
- ◆ **2** first-level national key disciplines: Traffic and Transportation Engineering; Information and Communication Engineering
- ◆ **2** second-level national key disciplines: Industrial Economics; Bridge and Tunnel Engineering
- ◆ **17** centers for post-doctoral studies
- ◆ **21** 1st-level discipline doctoral programs
- ◆ **33** 1st-level discipline master programs



**13** Academicians

**3040** Faculties

02

## ADMISSION METHOD

Applicants need to apply and submit complete application documents.

BJTU will review the applications by the method of documents review and other kind of assessment (eg.interviews) etc.

03

## DATE OF APPLICATION

January 1

June 30, 2022

Chinese government scholarship program application period is from January 1 to May 5, 2022

BJTU will announce the new deadline if there are any changes.



## 1. NON-CHINESE CITIZEN IN GOOD HEALTH

Note: Applicants of mainland China, Hong Kong, Macau and Taiwan who have immigrated to other countries should meet the criteria published by the "Ministry of Education of the PRC".

## 2. LANGUAGE PROFICIENCY REQUIREMENTS

(2.1) For programs taught in Chinese, applicants should at least meet one of the following criteria:

- a) An HSK 5 certification with a total score over 180 within 2 years.
- b) Prior study experiences (within 5 years) in the medium of Chinese and obtained a certification.
- c) The language requirement for scholarship programs may be different and applicants shall refer to the corresponding information of each individual scholarship program.

(2.2) For programs taught in English, applicants should at least meet one of the following criteria:

- a) IELTS 6.0 and above or TOEFL 80 and above within two years after the test date.
- b) Prior study experiences (within 5 years) in the medium of English and obtained a certification.
- c) The language requirement for scholarship programs may be different and applicants shall refer to the corresponding scholarship programs for detailed information.

## 3. ACADEMIC REQUIREMENTS

- 1 Be a high school graduate when applying for the undergraduate programs
- 2 Be a bachelor's degree holder when applying for the master's programs
- 3 Be a master's degree holder when applying for the doctoral programs

# APPLICATION PROCEDURES

## STEP 1

Register at BJTU International Student Service System (<http://bjtu.17gz.or>).

## STEP 2

Choose the study program, submit all the required documents and pay the application fee.

## STEP 3

Keep in touch with the BJTU, pay attention to the application feedback and wait for the result.



## 01 &gt;&gt;&gt; POPULAR MAJORS ▾

**Traffic and Transportation**

This major aims to cultivate senior engineering technical talents and compound management talents with solid mathematical and natural science foundation, and be able to engage in the planning and design of rail transit network, transport capacity resource allocation and transportation organization.

**CORE COURSES:**

Railway Operation Organization, Railway Freight Transportation, High-speed Railway Basic Technology, Transportation Planning, Urban Rail Transit Planning and Design, Intelligent Transportation Inspection.


**Communication Engineering**

This major was rated as an A-level subject in the double first-class evaluation in 2019 and was rated as a national first-class major in 2019. This major possesses two national key disciplines which are “communication & information system” and “signal & information processing”. Aiming to build an “internationally renowned and domestically first-class” subject, we train senior professionals who are competent in research, design, manufacturing, operation and management in the field of public communication and special communications for rail transit.

**CORE COURSES:**

Circuit, Signal and System, Analog Electronic Technology, Digital Electronics Technology, Electromagnetic Field and Electromagnetic Wave, Digital Signal Processing, Principles and Interface Technology of Microcomputer, Principles of Communication, Fundamental Theory of Communication Network, Fundamental of Wireless Communication, Internet Principles and Technology, and Fundamentals of Optical Technology.

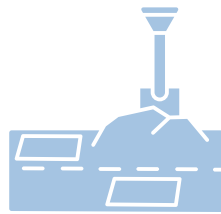


## Civil Engineering

This major cultivates elite talents who have solid basic theories and broad professional knowledge in civil engineering field, have a good command of theories of intelligent construction, operation and maintenance construction, have cross integration of artificial intelligence and other emerging technological capabilities, and capable of engaging in survey, design, construction, management and scientific research in civil engineering and other related fields.

### CORE COURSES:

Engineering Mechanics, Structural Mechanics, Structural Design Principle, Intelligent Construction Foundation, Life cycle Design Basis, Principle of Civil Engineering Construction, Building Information Model, Soil Mechanics and Foundation Engineering, Civil Engineering Materials.



## Vehicle Engineering

This major aims to cultivate first-class innovative engineering and technical talents who are oriented towards the future of rail transit, serving the national high-speed rail strategy, and leading the development of rail vehicle industry, graduates should have rail transit engineering background, have expertise in the field of intelligent design theory, intelligent manufacturing theory and rail vehicle engineering, and be able to solve complex engineering problems in rail vehicle system design, manufacturing and application.

### CORE COURSES:

Theoretical Mechanics, Mechanics of Materials, Automatic Control Principle, Mechanical Principle, Mechanical Design, Rail Vehicle Engineering, Rail Vehicle Design, Rail Vehicle Manufacturing, Rail Vehicle Transmission and Control, Rail Vehicle Intelligent Operation and Maintenance.



## Electrical Engineering and Automation

This major aims to cultivate versatile talents who are competent in scientific research, engineering design, system operation, technology development and project management in electrical engineering and related fields, and become a backbone of technology or management in rail transit and electric power and energy fields.

### CORE COURSES:

Circuit, Analog Electronics Technology, Digital Electronics, Engineering Electromagnetic Field, Electric Machinery, Automatic Control Theory, Microcomputer Principle and Interface Technology, Power System Analysis, Power Electronics, Signal and Systems.



## Logistics Management

It aims to cultivate competent leading talents in the field of logistics management with sound personality, social responsibility, solid professional foundation, strong practical ability, innovation and entrepreneurship awareness and international vision under the guidance of the characteristics of logistics and supply chain management.

### CORE COURSES:

Logistics, Management Operational Research, Supply Chain Management, Procurement and Supply Management, Logistics Operation Management, Logistics System Engineering, Logistics Information System, Logistics Big Data, Logistics Cost Management, International Logistics, Etc.





# 02 >>> LIST OF UNDERGRADUATE PROGRAMS

SCHOOLS	MAJORS	LANGUAGE	DURATION (YEARS)	TUITION FEE
School of Electronic and Information Engineering	Communication Engineering	Chinese	4	Chinese taught program: 24800CNY/year English taught program: 33800CNY/year
	Rail Traffic Signaling and Control	Chinese	4	
	Electronic Science and Technology	Chinese	4	
School of Computer and Information Technology	Computer Science and Technology	Chinese	4	
	Computer Science and Technology (Railway Information Technology)	Chinese	4	
	Artificial Intelligence	Chinese	4	
	The Internet of Things Engineering	Chinese	4	
School of Economics and Management	Economics	Chinese	4	
	Finance	Chinese	4	
	Accounting	Chinese	4	
	Financial Management	Chinese	4	
	Business Administration	Chinese	4	
	Logistics Management	Chinese	4	
	Information Management and Information System	Chinese	4	
	Engineering Management	Chinese	4	
School of Traffic and Transportation	Traffic and Transportation (Railway Transportation)	Chinese	4	
	Traffic and Transportation (Urban Rail Transit)	Chinese	4	
	Traffic and Transportation (Intelligent Transportation Engineering)	Chinese	4	
	Traffic and Transportation (Passenger Transportation and Service for High-speed Railway)	Chinese	4	



	Traffic and Transportation (Civil Aviation Transportation)	Chinese	4	Chinese taught program: 24800CNY/year English taught program: 33800CNY/year
	Traffic Engineering	Chinese	4	
	Logistics Engineering	Chinese	4	
	E-Commerce	Chinese	4	
School of Civil Engineering	Civil Engineering	Chinese	4	
	Railway Engineering	Chinese	4	
	Environmental Engineering	Chinese	4	
School of Mechanical, Electronic and Control Engineering	Mechanical Engineering	Chinese	4	
	Vehicle Engineering	Chinese	4	
	Measurement, Control Technology and Instrumentation	Chinese	4	
	Energy and Power Engineering	Chinese	4	
School of Electrical Engineering	Electrical Engineering	Chinese	4	
	Electrical Engineering and Automation (Renewable Energy)	English	4	
School of Science	Information and Computation Science	Chinese	4	
	Statistics	Chinese	4	
	Opto-electronic Information Science and Engineering	Chinese	4	
	Nanomaterials and Technology (Intelligent Material)	Chinese	4	
	Nanomaterials and Technology	English	4	
	Materials Chemistry	Chinese	4	
School of Languages and Communication Studies	Communication Studies	Chinese	4	
	Internet and New Media	Chinese	4	
School of Software Engineering	Software Engineering	Chinese	4	
School of Architecture and Design	Architecture	Chinese	5	
	Urban and Rural Planning	Chinese	5	
	Digital Media Arts	Chinese	4	
	Environmental Design	Chinese	4	
	Graphic Design	Chinese	4	
School of Law	Law	Chinese	4	

# 07

## MASTER'S PROGRAMS

### 01 >>> FEATURED MAJORS ▾

#### Logistics Engineering and Management (Taught in English)

Students of this major will gain solid theoretical knowledge, have a good command of the application of logistics facilities, system design and evaluation, and obtain advanced technologies and methods of logistics management, as well as international logistics engineering strategic concepts and management capabilities. We will help our students to grow into logistics engineering entrepreneurs and senior professional managers who meet the needs of international competition.

##### CORE COURSES:

Procurement and Supply Management, Logistic System Analysis and Design, Logistic (Supply Chain) Modeling and Simulation Experiment, Logistic Facilities Planning and Design, International Logistics Operation

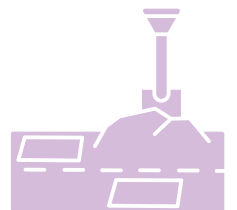


#### Civil Engineering (Taught in Chinese or English)

This major aims to cultivate high-quality innovative talents engaged in the research, development and management of civil engineering science and technology, to cultivate students with good moral quality and innovative awareness, international vision and teamwork spirit, and to master generous basic knowledge and in-depth professional knowledge of the subject system. Students should gain basic theories in civil engineering design and production organization management, and be able to research on the applied technology. This major specially emphasis its global vision on teaching context and methodology.

##### CORE COURSES:

Dynamics of Structures, Advanced Concrete Materials, Bridge engineering, Tunnel Mechanics and Engineering, Steel Structure, Track Engineering, Reinforced Concrete Design, Model Analysis and System Identification, Structural Wind Engineering, Sustainable Construction.

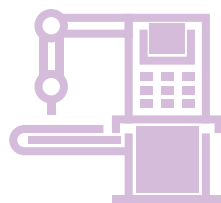


### Electrical Engineering (Taught in Chinese or English)

Based on the multidisciplinary characteristics of electrical engineering, this major will train students to extensively learn and master basic professional theories in the fields of natural sciences, social sciences, management economics and new energy. Guide students to master the solid basic theories and professional knowledge of the subject, have strong knowledge acquisition ability and academic discrimination ability, and have a comprehensive understanding of the current situation, development direction and international academic research frontiers and fields of the subject. Help students be able to engage in scientific research or independently undertake specialized technical work, have a rigorous, realistic, innovative scientific attitude and work style, and become engineers or scientists devoting to the society.

#### CORE COURSES:

Electric Network Theory, Modern Power System Analysis, Modern Electronic Circuit and System, Renewable Energy Micro-grid Systems, Modern Control Engineering.



### Traffic and Transportation (Taught in Chinese or English)

This major aims to cultivate students with a strong sense of professionalism, responsibility and dedication to science, good professional ethics and academic accomplishment, rigorous academic attitude, good spirit of cooperation and innovation. Besides, we will help student become senior railway transportation talents with strong engineering practice ability and practical problem-solving ability.

#### CORE COURSES:

Railway Transportation Organization Optimization Theory and Technology, Railway Infrastructure and Technical Equipment, Data Analysis Method and Software Application, Railway Station and Hub Design, Railway Passenger Transport Service, Modern Freight Transportation Technology, Modern Railway Transportation Technology, Railway Transportation Safety Management, High-Speed Railway Operation Management



### Urban and Rural Planning (Taught in Chinese or English)

This major aims to cultivate practical high-level talents who can adapt to the international trend, have a solid theoretical foundation, and be able to meet the needs of urban planning industry and practical work. Through a systematic and comprehensive study of the knowledge structure of urban planning and construction, graduates shall be leaders in the area of urban planning and construction with the ability to independently engage in urban planning and construction practice, have strong innovation ability, and can adapt to the new trend of economic construction and international competition environment.

#### CORE COURSES:

Urban and Regional Planning Theory, Urban Transportation, Urban Ecology Theory and Practice, Urban Economics Theory, Urban Infrastructure Planning.



# 02 >>> LIST OF UNDERGRADUATE PROGRAMS

SCHOOLS	MAJORS	LANGUAGE	DURATION (YEARS)	TUITION FEE
School of Electronic and Information Engineering	Traffic Information Engineering and Control	Chinese	3	
	Electronic Science and Technology	Chinese	3	
School of Economics and Management	Information and Communication Engineering	Chinese	3	
	Finance	Chinese	3	
	Industrial Economics	Chinese	3	
	International Trade	Chinese	3	
	Labor Economics	Chinese	3	Chinese taught program: 29000CNY/year
	Management Science	Chinese	3	(41000CNY/year for MBA)
	Logistics Management and Engineering	Chinese	3	English taught Program: 35000CNY/year
	Information Management	Chinese	3	(63000CNY/year for MBA)
	Engineering and Project Management	Chinese	3	
	Accounting	Chinese	3	
	Business Management	Chinese	3	
	Tourism Management	Chinese	3	
	Technology Economics and Management	Chinese	3	
	Public Management	Chinese	3	
	Master of Finance	Chinese	2	
Master of Applied Statistics	Chinese	2		
Master of Auditing	Chinese	2		

	Master of Business Administration	Chinese/English	2	
	Master of Professional Accounting	Chinese	2	
	Master of Engineering Management	Chinese	2	
	Industrial Engineering and Management	Chinese	2	
	Logistics Engineering and Management	English	2	
School of Traffic and Transportation	System Science	Chinese/English	3	
	Control Science and Engineering	Chinese	3	
	Transportation Planning and Management	Chinese	3	
	Safety Science and Engineering	Chinese	3	
	Logistics Engineering and Management	Chinese	2	
	Traffic and Transportation	Chinese/English	2	Chinese taught program: 29000CNY/year
				(41000CNY/year for MBA)
School of Civil Engineering	Civil Engineering	Chinese/English	3	
	Highway and Railway Engineering	Chinese	3	English taught Program: 35000CNY/year
School of Mechanical, Electronic and Control Engineering	Vehicle Operation Engineering	Chinese	3	(63000CNY/year for MBA)
	Mechanical Design and Theory	Chinese	3	
	Mechatronics Engineering	Chinese	3	
	Mechanical Manufacture and Automation	Chinese	3	
	Power Machinery and Engineering	Chinese	3	
	Thermal Energy Engineering	Chinese	3	
	Material Science and Engineering	Chinese	3	
	Vehicle Engineering	Chinese	3	
	Industrial Engineering	Chinese	3	
School of Electrical Engineering	Electrical Engineering	Chinese/English	3	

CONTINUED

School of Science	Fundamental Mathematics	Chinese	3	Chinese taught program: 29000CNY/year (41000CNY/year for MBA) English taught Program: 35000CNY/year (63000CNY/year for MBA)
	Computational Mathematics	Chinese	3	
	Probability and Mathematical Statistic	Chinese	3	
	Applied Mathematics	Chinese	3	
	Operations Research and Cybernetics	Chinese	3	
	Physics	Chinese	3	
	Biology	Chinese	3	
	System Theory	Chinese	3	
	Statistics	Chinese	3	
	Optical Engineering	Chinese	3	
Materials Engineering	Chinese	2		


CONTINUED


School of Languages and Communication Studies	Journalism and Communication	Chinese	3	Chinese taught program: 29000CNY/year (41000CNY/year for MBA) English taught Program: 35000CNY/year (63000CNY/year for MBA)
	Journalism and Mass Communication	Chinese	2	
	English Translation	Chinese/English	2	
	Foreign Language and Literature	English	3	
School of Software Engineering	Software Engineering	Chinese	3	English taught Program: 35000CNY/year (63000CNY/year for MBA)
	Software Engineering (Professional Degree)	Chinese/English	2	
School of Architecture and Design	Urban and Rural Planning	Chinese	3	English taught Program: 35000CNY/year (63000CNY/year for MBA)
	Architecture	Chinese	3	
	Design Science	Chinese	3	
	Urban and Rural Planning	English	2	
School of Law	Science of Law	Chinese	3	



## DOCTORAL PROGRAMS



 Four disciplines are in the top 1% of ESI, which are engineering, computer science, materials science and social science.

 There are four national key disciplines, including two first-level national key disciplines (transportation engineering, information and communication engineering) and two second-level national key disciplines (industrial economics, bridge and tunnel engineering).

# 01 >>> LIST OF DOCTORAL PROGRAMS

SCHOOLS	MAJORS	LANGUAGE	DURATION (YEARS)	TUITION FEE
School of Electronic and Information Engineering	Traffic Information Engineering and Control	Chinese	4	Chinese taught program: 34000CNY/year English taught Program: 40000CNY/year
	Electronic Science and Technology	Chinese	4	
	Information and Communication Engineering	Chinese	4	
School of Economics and Management	Technology Economics and Management	Chinese	4	
	Tourism Management	Chinese	4	
	Business Management	Chinese	4	
	Accounting	Chinese	4	
	Information Management	Chinese	4	
	Engineering and Project Management	Chinese	4	
	Logistics Management and Engineering	Chinese	4	
	Applied Economics	Chinese	4	
Management Science	Chinese	4		
School of Traffic and Transportation	Control Science and Engineering	Chinese	4	
	Transportation Planning and Management	Chinese	4	
	Safety Science and Engineering	Chinese	4	
	System Science	Chinese/English	4	

School of Civil Engineering	Civil Engineering	Chinese/English	4	Chinese taught program: 34000CNY/year English taught Program: 40000CNY/year
	Highway and Railway Engineering	Chinese/English	4	
	Mechanics	Chinese	4	
School of Mechanical, Electronic and Control Engineering	Vehicle Operation Engineering	Chinese	4	
	Mechanical Engineering	Chinese	4	
School of Electrical Engineering	Electrical Engineering	Chinese	4	
	Vehicle Operation Engineering	Chinese	4	
School of Science	System Theory	Chinese	4	
	Physics	Chinese	4	
	Operations Research and Cybernetics	Chinese	4	
	Applied Mathematics	Chinese	4	
	Probability Theory and Mathematical Statistics	Chinese	4	
	Computational Mathematics	Chinese	4	
	Statistics	Chinese	4	
	Optical Engineering	Chinese	4	
School of Software Engineering	Software Engineering	Chinese	4	



# NON-DEGREE PROGRAMS

PROGRAMS	INTRODUCTION	TUITION FEE
Preparatory Program	This program provides one-year preparatory training courses for foreign students who would like to apply degree programs at BJTU. There are four types of preparatory program, including humanities, business, science and medicine. High school diploma is required to apply for the Preparatory program.	CNY 22,000/ year
Senior Scholars Program	This program is for students with a master's degree or higher to work on thematic projects at BJTU	CNY 13,500/semester
General Scholars Program	This program is for the students (undergraduate sophomore students and above) to take courses or conduct research activities at BJTU..	CNY 11,000/semester
Chinese Language Program	This program offers six levels of Chinese language and cultural courses from beginner level to the advanced level. Through this program, learners can improve their Chinese communicative competence and deepen their understanding of Chinese history, culture and modern society. Students can choose to study either one semester or one year. High school diploma is required to apply for the Chinese language program.	CNY 11,000/semester
Short-term Training Program	We customize short-term training programs for our partners in different fields such as civil engineering, management, operation, maintenance, urban and rural planning according to their diversified and specific needs. Provide training service for management and technical personnel in different aspects.	Charged according to customized plan
Summer/ Winter Camp	We offer short-term programs which include Chinese language study, culture experience and academic exchanges activities during summer and winter breaks.	



- ① Application Form for Chinese Government Scholarship (Visit [www.campuschina.org](http://www.campuschina.org) and access from "Scholarship Application for Students");

Applicants for Chinese government scholarships are required to provide the Chinese Government Scholarship Application Form; other applicants are not required to provide the above form.

- ② A Scanned Copy of the Passport Information Page. An applicant shall submit a clear scanned copy of the information page of his/her passport that will not expire on or before March 1, 2023. Renew the passport if the requirement is not met. An applicant who fails to apply for a passport due to objective reasons may submit valid documentation or documentary evidence that carries information about the full English name, sex, nationality and date of birth of the applicant upon the approval of BJTU;
- ③ Diploma and Certificate of Highest Education (notarized photocopy). An applicant who is a current university student shall submit the certificate of expected graduation or student status issued by his/her university; Diploma and certificate in languages other than Chinese or English shall be attached with notarized translations in Chinese or English;
- ④ Academic Transcripts. Transcripts in languages other than Chinese or English shall be attached with notarized translations in Chinese or English;
- ⑤ A Study or Research Plan Written in Chinese or in English (no less than 200 words/characters for undergraduates; no less than 500 words/characters for scholars; no less than 800 words/characters for postgraduates);
- ⑥ Personal Resume (An applicant for the arts or design program shall provide his/her own works (such as videos and paintings));

- ⑦ Recommendation Letters. An applicant for a postgraduate program or for academic education as a senior scholar shall submit two recommendation letters in Chinese or in English from professors or associate professors
- ⑧ Letter of Acceptance from the Supervisor (not required, template can be downloaded from the official website or provided by the supervisor himself).
- ⑨ Certificate of language proficiency. When applying for a Chinese-taught program, an applicant shall provide a valid HSK score report that meets the program's language ability requirements. When applying for a program taught in a language other than Chinese, an applicant shall provide a certificate of proficiency in the language as required by the designated university, such as the IELTS or TOEFL test report
- ⑩ An applicant to study in China for more than six months shall submit a photocopy of the Foreigner Physical Examination Form (the original document, printed by Chinese quarantine authorities, shall be filled in in English and kept by the applicant). The medical examinations must cover all the items listed in the Foreigner Physical Examination Form. Incomplete records or those without the signature of the attending physician, the official stamp of the hospital, or a sealed photograph of the applicant are invalid. Medical examination results are valid for only six months; (Download at <http://cie.bjtu.edu.cn/contentType/7.htm>)
- ⑪ An applicant shall submit a valid Certificate of Non-Criminal Record (or Police Clearance Certificate) issued by the local public security (such as the police station), usually issued within six months prior to the submission date of the application.
- ⑫ Proof of Funds (bank statements for the last 1 month with a balance of at least US\$10,000.
- ⑬ An applicant under the age of 18 shall submit the legal documents of his/her legal guardian(s) in China;





## 01 >>> ON-CAMPUS ACCOMMODATION ▾

- ◆ Safe, clean and comfortable dorms;
- ◆ A variety of rooms including single room, double room and triple room to satisfy individual needs (Based on Availability);
- ◆ Equipped with shared kitchen, laundry room, bathroom, TV, internet cable & WIFI, air-conditioner, bookshelves, desk and closet;
- ◆ There are common areas in the apartment building for group study and social activities.
- ◆ Staffs in the apartments are on duty 24 hours and CCTV are quipped in public areas to ensure safety of students.

BEIJING  
CAMPUS

Double or triple room  
14400—21600 RMB/ year/ person

The above mentioned cost of dormitory is for reference only, it may change each year

## 02 >>> STUDENT SUPPORT & SERVICE

Efficient and timely service for international students is provided from the moment of contact; we are here to respond to your concerns and help.

- ◆ Efficient and timely service for international students is provided from the moment of contact; we are here to respond to your concerns and help.
- ◆ Great support will be provided for study, visa, insurance, health and your daily life on campus;
- ◆ The international student comprehensive service hall provides one-stop service for students, including information inquiry, students' affairs handling and leisure communication.
- ◆ At the same time, we also provide online service; students could scan the QR code to make appointment to request transcript and various certificates etc.;
- ◆ We have "Listening Room" with full-time psychological counselor to provide psychological consulting and carrying out activities aiming to help students to get a deeper and better inter-cultural understanding.

There are various campus facilities and student activities to enrich your life at BJTU:

### LIBRARY

to supply a large number of literature collections and electronic resources for study and research;

### STADIUM

We have indoor gymnasium, like badminton hall, track and field court, outdoor basketball court, tennis court, swimming pool and other sports facilities for you to carry out various sports activities;

### RESTAURANT

There are 10 student restaurants on the main campus and 3 student restaurants on the east campus. We have one cafeteria just offer Halal meals.

Please feel free to make any inquiries either online or simply stopping by at the office. Our staff can provide multi-language service and support;

More information please refers to International Students Service Center:

<http://cie.bjtu.edu.cn/>

## 03 >>> STUDENT ORGANIZATIONS AND ACTIVITIES

### International Student Union:

- ◆ Here, we can make friends with students from various countries, and organize campus activities such as language learning, cultural exchange, social practice, festival celebration and so on.
- ◆ We hold international cultural festival, New Year party, variety of competitions and other major events to encourage our students to celebrate diverse cultures, knowledge and identities.
- ◆ We hold various competitions in the field

culture, art, sport and etc. to help the students to relax their body and mind as well as to improve their capabilities in various areas.

- ◆ We offer academic events such as lectures and salons to enable all our students and staff to achieve their potential.

### "Journey of Ark" cultural exchange platform:

- ◆ By sharing stories of different cultures, we can expand the diversity of cultures on campus and cultivate the spirit of symbiosis.





**1.** Chinese Government Scholarship--Bilateral Program (Type A)

For details, please visit <https://www.campuschina.org/>

**2.** Chinese Government Scholarship-- “Silk Road” Program and Chinese University Program (Type B)

For details, please visit <https://www.campuschina.org/>

**3.** Chinese Government Scholarship-- China-Africa Friendship Program (Type B)

For details, please visit <https://www.campuschina.org/>

**4.** MOFCOM Scholarship

For details, please visit <https://www.campuschina.org/>

**5.** International Chinese Language Teachers Scholarship (Confucius Institute Scholarship)

For details, please visit <https://www.cis.chinese.cn>

**6.** Beijing Municipal Government Scholarship

For details, please visit <http://cie.bjtu.edu.cn>

**7.** BJTU Scholarship for International Students

For details, please visit <http://cie.bjtu.edu.cn>

13

## CONTACT US

ADDRESS | College of International Education, Beijing Jiaotong University  
No.3 Shangyuancun, Xizhimengwai, Haidian District, Beijing, China, 100044

TEL | +86-10-5168 4535 / +86-10-5168 5179

FAX | +86-10-5168 5258

QQ | 3176204588

EMAIL | [bjtudmission@foxmail.com](mailto:bjtudmission@foxmail.com)

WEBSITE | BJTU Home Page: <http://www.bjtu.edu.cn>  
BJTU International Student Service System: <http://bjtu.17gz.org>  
BJTU College of International Education Portal: <http://cie.bjtu.edu.cn>

ADDRESS | College of International Education, Beijing Jiaotong University  
No.3 Shangyuancun, Xizhimengwai, Haidian District, Beijing, China, 100044

TEL | +86-10-5168 4535 / +86-10-5168 5179

FAX | +86-10-5168 5258

QQ | 3176204588

EMAIL | [bjtudmission@foxmail.com](mailto:bjtudmission@foxmail.com)

WEBSITE | BJTU Home Page: <http://www.bjtu.edu.cn>  
BJTU International Student Service System: <http://bjtu.17gz.org>  
BJTU College of International Education Portal: <http://cie.bjtu.edu.cn>



Beijing Jiaotong University  
College of International Education