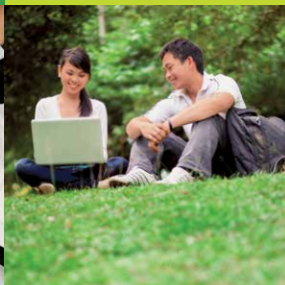
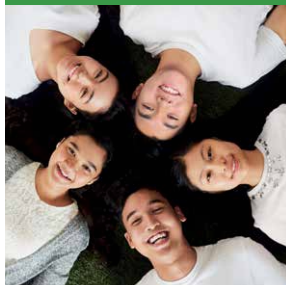
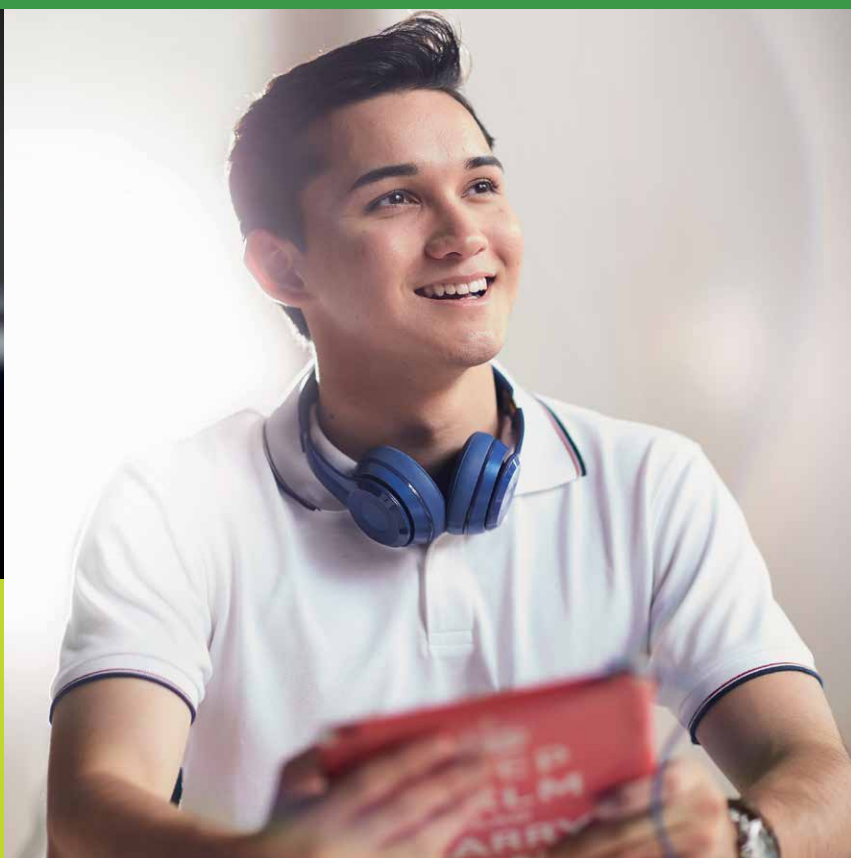
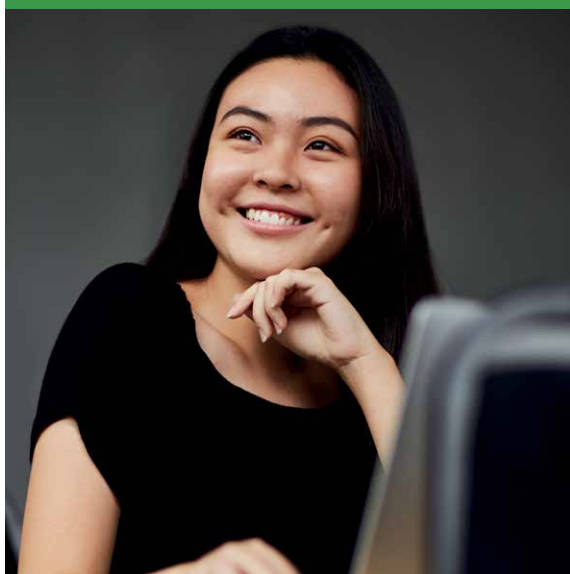




# FOUNDATION IN ARTS FOUNDATION IN SCIENCE





The new Business Analytics and Technology Innovation Centre at HELP's Subang 2 campus

# HELP

## THE ANALYTICS-DRIVEN ENTREPRENEURIAL UNIVERSITY

To prepare for the future, we are transforming to become the Analytics-Driven Entrepreneurial University. Our effort is recognised by MDEC which conferred on us the Premier Digital Tech University Award. We also received the MDEC Recognition for Certificate training in Data and Business Analytics for students.

To support this transformation, HELP invested RM25 million in the Business Analytics and Technology Innovation Centre (BATIC) which will innovate and incubate techno-entrepreneurship. At the same time, we are investing heavily in re-skilling and up-skilling staff capabilities in data science and data analytics. We are getting bigger, better, bolder in our innovative education investment.

Besides using analytics to drive our management and teaching, we are also building our research capability in analytics application. Part of the research grant from the Ministry of Education and internal funding is allocated for analytics research.

To complement the above development we have signed up with Bloomberg to set up one of the largest Bloomberg Finance Labs among private institutions in Malaysia. This resource facility boosts the economics, business, financial and analytics training in our Faculty of Business, Economics and Accounting, the ELM Graduate School and the Faculty of Computing and Digital Technology.

In addition, we have training and internship collaboration with multinational companies like Alibaba, Sheng Tai International and techno-entrepreneurs.

Internationally, HELP has earned further recognition for its innovative efforts. In the QS Star Rating System, we were awarded the maximum 5 Stars in 9 categories of endeavour, including Online Learning and Business and Management Studies; in the QS World University Ranking we were placed No. 1 in Asia for Outbound Student Exchange in recognition of our achievements in placing students in top institutions worldwide and for being a university of choice for students from many continents.

### ALL HELP STUDENTS ARE ELIGIBLE FOR THE FREE CERTIFICATE IN DATA AND BUSINESS ANALYTICS COURSE

Competency in a profession), we have designed the TEA culture to nurture the right skills and predisposition in our students.

TEA is the acronym for Thinking mind, Entrepreneurial attitude, Analytics skills: T is about robust thinking skills; E is about having a problem-solving mindset; A is about the skills in applying evidence-based management using data analytics. Each of these is supported by a programme of skills training and attitude development, viz the Critical Thinking Skills Programme, the Entrepreneurship-Leadership-Management Programme (ELM), and the Analytics Certificate Programme. This is the core education culture of HELP University as we prepare our students to be IR 4.0 future ready.

During the last 33 years HELP has been exploring and experimenting with innovative ways to evolve our education philosophy, principles and practices. To achieve the 3 Cs (Character development, Competency in leadership, and

## FOUNDATION FOR THE FUTURE

The role of education has evolved and undergone paradigm shifts, from that which focuses on purely imparting knowledge to the present, which focusses on nurturing resilient individuals for the global job market. We live in turbulent times where volatility, uncertainty, complexity and ambiguity (VUCA) is the order of the day.

There is a pressing need to embrace change and meet the demands of the global environment filled with myriad challenges. Therefore, the right type of education can make the difference between success and failure. Sadly, the paradigm of traditional education is proving to be ineffective because it is based on an intrinsic mistrust of the human personality.

What is truly needed is an all-encompassing education that takes cognisance of student needs by taking into account their multiple intelligences. Every student is different and it is imperative to recognise their true potential. Finding their passion and building resilience is key to overall development.

The pre-university education stage is a critical platform for human capital development. It is crucial to focus on this stage of development in initiating a focus towards human capital development in a student to assess their attitude and aptitude that are suitable for a particular profession. Thus, the premise of HELP Matriculation Centre's Foundation in Arts and Foundation in Science programmes is to provide an environment and a platform for them to free their minds from prejudices and insecurity and cultivate meaningful human intelligence or creative intelligence and prepare them for the path ahead with the right values, competencies and confidence.

The Foundation programmes' international recognition lends credence to the quality of the course as the students have the flexibility and options to choose multiple disciplines, locally and abroad, when the time comes for them to enter university. The free Certificate in Data and Business Analytics course provided to the students further enhances their preparation to rise up to the challenges and excel in the IR 4.0 era.

At HELP Matriculation Centre we believe not only in preparing our students to become employable graduates, but we also feel the importance of creating principled graduates who will be conscientious and respectful to the environment that we live in. Students who withstand the test of time and win in the digital-driven world will have one thing in common: a strong Cutting Edge foundation for the future.

**Dhanesh Balakrishnan**  
Dean, Faculty of University Foundation Studies







## HELP MAKE YOUR CAREER WITH A STRONG

F

Flexible programmes  
offering various options



O

Optimistic worldview



U

Unique and unrivalled  
comprehensive curriculum



N

Nurturing right values



D

Data driven to meet the  
demands of IR4.0



A

Analytical and creative  
thinking emphasised



T

Talent and character build  
winning personality



I

Innovative and different



O

Other Centred



N

Novel – challenging students to  
venture into uncharted territory



### OUR VISION

To be a university with a strong culture of quality and leadership that focuses on sound academic standards, continuous improvement, and the talent development of students and staff.

To be a university that offers a learning experience that enhances career development, lifetime values and personal fulfilment.

To be a university with a strong research focus in our key areas of excellence.

To be a university that shares our success with the stakeholders and communities we serve.

### OUR MISSION

To help people succeed in life and to live a life of significance through education.





## FOUNDATION IN ARTS

KPT/JPS (R2/010/3/0224) (A10668) 07/24

### PROGRAMME

- 50 credit hours
- 3 semesters / 14 weeks per semester
- 13 subjects (9 core + 4 electives)
- Coursework / Assignments – 50% and Examination - 50%

### SEMESTER 1 SUBJECTS (5 core = 18 credit hours)

- Intermediate English (4 credit hours)
- Finite Mathematics (4 credit hours)
- Computing Principles (4 credit hours)
- Study Skills (3 credit hours)
- Personal Development and Leadership (3 credit hours)

### SEMESTER 2 SUBJECTS (2 core + 2 electives = 16 credit hours)

- Advanced English (Pre-requisite: Intermediate English) (4 credit hours)
- Critical Thinking Skills (4 credit hours)
- 2 Electives

### SEMESTER 3 SUBJECTS (2 core + 2 electives = 16 credit hours)

- Culture, Arts and Politics (4 credit hours)
- Statistics (4 credit hours)
- 2 Electives

### ELECTIVES (each elective subject = 4 credit hours)

- Principles of Accounting
- Introduction to Business Principles
- Calculus
- C Programming (c)
- Fundamentals of Early Childhood Education
- Economics Principle
- Principles of ESL Teaching and Learning (Online Learning)
- Introduction to Human Communication
- Introduction to Legal Studies
- Introduction to Marketing
- Introduction to Programming
- Public Speaking and Presentation Skills
- Psychology for Personal Development
- Introduction to Tourism and Hospitality



## FOUNDATION IN SCIENCE

KPT/JPS (R2/010/3/0225) (A10667) 07/24

### PROGRAMME

- 50 credit hours
- 3 semesters / 14 weeks per semester
- 13 subjects (8 core + 5 electives)
- Coursework / Assignments – 50% and Examination - 50%

### SEMESTER 1 SUBJECTS (5 core = 18 credit hours)

- Intermediate English (4 credit hours)
- Calculus (4 credit hours)
- Computing Principles (4 credit hours)
- Study Skills (3 credit hours)
- Personal Development and Leadership (3 credit hours)

### SEMESTER 2 SUBJECTS (2 core + 2 electives = 16 credit hours)

- Advanced English (Pre-requisite: Intermediate English) (4 credit hours)
- Critical Thinking Skills (4 credit hours)
- 2 Electives

### SEMESTER 3 (1 core + 3 electives = 16 credit hours)

- Culture, Arts and Politics (4 credit hours)
- 3 Electives

### SCIENCE ELECTIVES (must complete two sets)

(Each elective subjects = 4 credit hours)

- Biology I: Molecules, Cells & Energy
- Biology II: Systems & Functions (Pre-requisite: Biology I)
- Chemistry I: Elements, Compounds & Organic Chemistry 1
- Chemistry II: Thermochemistry & Organic Chemistry 2 (Pre-requisite: Chemistry I)
- Physics I: Mechanics, Light & Optics
- Physics II: Fluid Mechanics, Electricity & Magnetism (Prerequisite: Physics I)

### ELECTIVES (each elective subject = 4 credit hours)

- C Programming (c)
- Economics Principle
- Finite Mathematics
- Introduction to Human Communication
- Introduction to Legal Studies
- Introduction to Programming
- Psychology for Personal Development
- Statistics

## ENTRY REQUIREMENTS

### FOUNDATION IN ARTS

- 5 SPM/SPMV Credits including a pass in Bahasa Melayu and History
- 5 O-Level credits
- 3 Bs in UEC
- Other equivalent qualifications recognised by the Malaysian Government.

### FOUNDATION IN SCIENCE

- 5 SPM/SPMV Credits. At least a credit in Mathematics and 2 Science subjects (Biology/ Chemistry/Physics) and a pass in Bahasa Melayu and History.

- 5 O-Level Credits. At least a credit in Mathematics and 2 Science subjects (Biology/ Chemistry/Physics)
- 3B's in UEC. At least a credit in Mathematics and 2 Science subjects (Biology/Chemistry/ Physics)
- Other equivalent qualifications recognised by the Malaysian Government.

### INTAKES

January, March/April, May, September

### ADDITIONAL PREREQUISITES

Students wishing to pursue the following undergraduate programmes are required to meet the following prerequisites in SPM or equivalent qualifications:

### ACCOUNTING & FINANCE

- Credit in Mathematics
- Pass in English

### BUSINESS

- Pass in Mathematics and English

### COMMUNICATION

- Credit in English

### COMPUTER SCIENCE / SOFTWARE ENGINEERING

- Credit in Additional Mathematics

### INFORMATION TECHNOLOGY

- Credit in Mathematics

### PSYCHOLOGY

- Credit in Mathematics
- Credit in one Science / General Science subject
- A in English

### TEACHING ENGLISH AS A SECOND LANGUAGE

- Pass in English

### DENTISTRY, MEDICINE AND PHARMACY

- 5 Bs each in Biology, Chemistry, Physics, Mathematics (or Additional Mathematics) and another subject





## BUSINESS

(Accounting, Banking, Economics, Entrepreneurship, Hospitality, Human Resources, International Business, Marketing, Management)

SPM → FOUNDATION IN ARTS/SCIENCE (1 YEAR)



### 3+0

#### MALAYSIA

HELP University

#### UNITED KINGDOM

- HELP Academy\*
- University of London Programmes
- University of Derby Programmes
- University of London Programmes
- Anglia Ruskin University\*

\*Various disciplines of specialisation

### 2+1

#### AUSTRALIA

- University of Queensland
- Griffith University
- University of Wollongong

#### UNITED KINGDOM

- University of Hertfordshire
- Bangor University
- University of the West of England, Bristol
- Middlesex University
- Anglia Ruskin University
- University College Birmingham
- Robert Gordon University

### 1½ + 1½

#### AUSTRALIA

- Queensland University of Technology
- University of South Australia

#### NEW ZEALAND

- Victoria University of Wellington

### 1+2

#### AUSTRALIA

- Australian National University
- University of Melbourne
- University of New South Wales
- University of Western Australia
- Macquarie University

#### UNITED KINGDOM

- University of Essex
- Cardiff University
- University of Leeds
- University of Liverpool
- University of Portsmouth
- Queen's University of Belfast

#### NEW ZEALAND

- University of Otago

### DIRECT ENTRY\*

#### AUSTRALIA

- Monash University
- University of New South Wales
- University of Queensland
- University of Sydney
- Bond University
- Federation University
- Deakin University
- Edith Cowan University
- Flinders University
- Macquarie University
- Murdoch University
- University of South Australia
- Australian Catholic University
- Swinburne University of Technology
- University of Technology Sydney

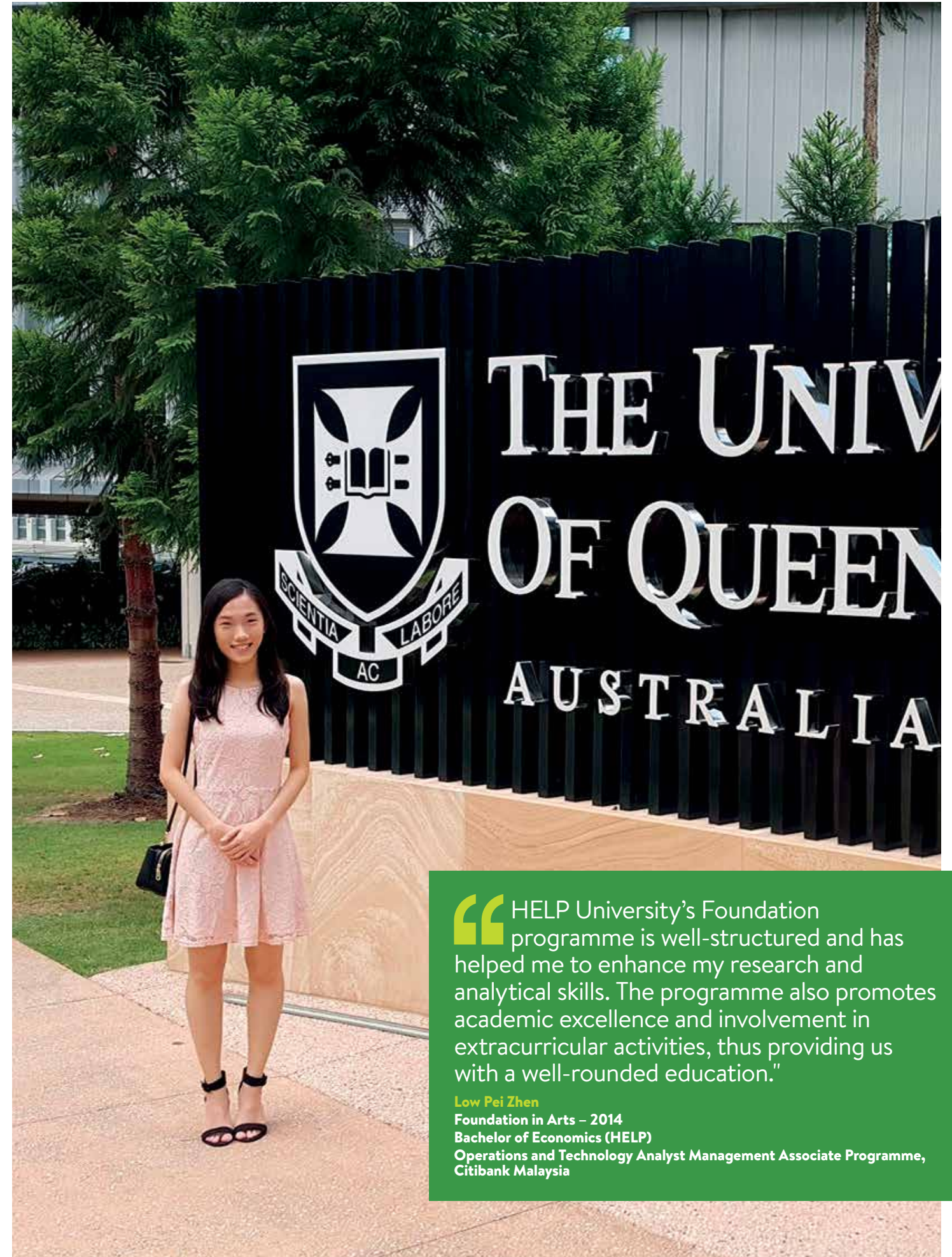
#### NEW ZEALAND

- Massey University
- University of Canterbury
- University of Waikato

#### UNITED KINGDOM

- University of Leeds
- University of Surrey
- Queen's University of Belfast
- University of Essex
- University of Liverpool
- Swansea University
- Cardiff University
- Aberystwyth University
- Nottingham Trent University
- University of Portsmouth
- University of the West of England, Bristol
- Bangor University
- Northumbria University
- Oxford Brookes University
- Middlesex University
- University of Chester
- University of Derby

- Teesside University
- Anglia Ruskin University
- York St John University
- Leeds Beckett University
- Wrexham Glyndwr University
- University College Birmingham
- University of London Programmes
- University of Nottingham (Malaysia Campus)
- INTO University of East Anglia
- INTO University of Exeter
- INTO University of Glasgow
- INTO University of Manchester (NCUK)
- INTO University of Newcastle



“HELP University’s Foundation programme is well-structured and has helped me to enhance my research and analytical skills. The programme also promotes academic excellence and involvement in extracurricular activities, thus providing us with a well-rounded education.”

Low Pei Zhen

Foundation in Arts – 2014

Bachelor of Economics (HELP)

Operations and Technology Analyst Management Associate Programme, Citibank Malaysia



## PSYCHOLOGY

SPM → FOUNDATION IN ARTS/ SCIENCE (1 YEAR)



### 3+0

#### MALAYSIA

- HELP University\*

\*Completed HELP Foundation with a minimum of 4 credits

#### AUSTRALIA

- HELP-Flinders University

(Honours Year available for students who meet the entry requirements prescribed by Flinders University which can be completed at HELP University)

### 2+1

#### AUSTRALIA

- Murdoch University
- Flinders University
- Macquarie University
- Queensland University of Technology
- University of South Australia

#### NEW ZEALAND

- University of Otago
- Massey University

#### UNITED KINGDOM

- Bangor University
- University of the West of England, Bristol
- Middlesex University
- University of Hertfordshire
- University of Northampton
- University of Portsmouth
- Northumbria University

### 1+2

#### AUSTRALIA

- University of Queensland (1+2 & 1+3)

#### UNITED KINGDOM

- University of Leeds
- University of Sheffield
- Queen's University of Belfast
- University of Essex
- Cardiff University
- Aberystwyth University
- University of Huddersfield
- University of Manchester
- Goldsmith College
- University of Plymouth

### DIRECT ENTRY\*

#### AUSTRALIA

- Monash University
- University of New South Wales
- University of Queensland
- Australian Catholic University
- Bond University
- Deakin University
- Edith Cowan University
- Flinders University
- Macquarie University
- Murdoch University
- University of South Australia
- Swinburne University of Technology
- University of Wollongong

#### NEW ZEALAND

- Massey University
- University of Waikato
- University of Canterbury

#### UNITED KINGDOM

- University of Leeds
- University of Essex
- Aberystwyth University
- University of Portsmouth
- University of the West of England, Bristol
- Northumbria University
- Middlesex University
- University of Northampton

\*Direct entry subject to meeting universities' requirements

“HMC was straightforward, fast and simple to decide for me. The elements designed have exposed me enough to make a decision for my pursuit of degree education.”

Sam Kon

Foundation in Arts, 2006  
HELP BPsych (Second Upper Hons)  
Chief Operating Officer (COO) of  
Beyond Infinity Consultancy (Malaysia)



## COMMUNICATION

(Media Studies, Public Relations, Marketing Communication)

SPM → FOUNDATION IN ARTS/ SCIENCE (1 YEAR)



**3 + 0**

**MALAYSIA**

- HELP University

**2 + 1**

**AUSTRALIA**

- University of South Australia
- University of the Sunshine Coast
- Queensland University of Technology (2+1.5)

**UNITED KINGDOM**

- Hertfordshire University
- University College Birmingham

**1 + 2**

**AUSTRALIA**

- Macquarie University
- University of New South Wales
- University of Queensland
- Deakin University

### DIRECT ENTRY\*

**AUSTRALIA**

- Monash University
- University of New South Wales
- University of Queensland
- University of Sydney
- Australian Catholic University
- Bond University

- Flinders University
- Macquarie University

**NEW ZEALAND**

- Massey University
- University of Waikato
- University of Canterbury

**UNITED KINGDOM**

- University of Leeds
- University of Essex
- Northumbria University
- Middlesex University
- Hertfordshire University
- University of Chester

- York St John University
- Leeds Beckett University
- Institute of Technology Carlow, Ireland
- Teesside University

*\*Direct entry subject to meeting universities' requirement*

## INFORMATION TECHNOLOGY

(Information Technology, Computer Science, Data Analytics, Software Engineering)

SPM → FOUNDATION IN ARTS/ SCIENCE (1 YEAR)



**3 + 0**

**MALAYSIA**

- HELP University
- United Kingdom
- Anglia Ruskin University\* International Programmes

*\*For Foundation in Science only. Various disciplines of specialisation*

**2 + 1**

**AUSTRALIA**

- University of Queensland
- Bachelor of Information Technology (2+1)
- Bachelor of Computer Science (2+2)
- BEng (Software) (2+2)
- University of Technology Sydney (2+1.5)

**1 + 2**

**UNITED KINGDOM**

- Cardiff University
- University of Essex

### DIRECT ENTRY\*

**AUSTRALIA**

- Monash University
- University of New South Wales
- University of Queensland
- Bond University
- Edith Cowan University
- Federation University
- Flinders University

- Macquarie University
- Murdoch University
- University of South Australia
- Swinburne University of Technology
- University of Technology Sydney

**NEW ZEALAND**

- Massey University
- University of Waikato
- University of Canterbury

**UNITED KINGDOM**

- University of Essex
- University of Portsmouth
- Northumbria University

- University of the West of England, Bristol
- Middlesex University
- University of Chester
- York St John University
- Teesside University

*\*Direct entry subject to meeting universities' requirements*



The Foundation in Arts course at played a significant role in helping me decide my career path. I met some of the most dedicated and passionate lecturers who were not only concerned with the syllabus and academic material, but also paid close attention in ensuring the development of soft skills which are essential at the workplace.”

**Emeline Khoo**

**Foundation in Arts (2014)**

**Recipient of the Lord Templeman Scholarship (2016)**

**LLB First Class Honours, University of the West of England, Bristol (2017)**

**Bar Professional Training Course, University of the West of England, Bristol (2018)**



## LAW

SPM → FOUNDATION IN ARTS / SCIENCE (1 YEAR)



**2 + 1**

**UNITED KINGDOM**

- (UK Law Degree Transfer Programme)
- University of Leeds
- University of Liverpool
- Cardiff University
- Aberystwyth University
- University of the West of England, Bristol

- Northumbria University
- University of Hertfordshire

**1+2**

**UNITED KINGDOM**

- (UK Law Transfer Programme)
- University of Sheffield

### DIRECT ENTRY\*

- University of Essex
- Aberystwyth University
- Northumbria University
- University of Hertfordshire

*\*Direct entry subject to meeting universities' requirements*

**MALAYSIA**

- HELP University Bachelor of Laws



## EARLY CHILDHOOD EDUCATION

SPM → FOUNDATION IN ARTS (1 YEAR)



### 3 + 0

#### MALAYSIA

- HELP University

### 2 + 1

#### UNITED KINGDOM

- University College Birmingham

### 1 + 2

#### UNITED KINGDOM

- University of Leeds

### DIRECT ENTRY\*

#### AUSTRALIA

- Monash University

#### UNITED KINGDOM

- Middlesex University
- University College Birmingham

#### NEW ZEALAND

- University of Canterbury

*\*Direct entry subject to meeting universities' requirements*

## AMERICAN DEGREE PROGRAM

SPM → FOUNDATION IN ARTS (1 YEAR)



### DIRECT ENTRY\*

#### UNITED STATES

- Hawai'i Pacific University\*

*\*Upon completion of the HELP Foundation in Arts, students may apply for direct entry into the Sophomore Year (Year 2)*

## TEACHING ENGLISH AS A SECOND LANGUAGE

SPM → FOUNDATION IN ARTS (1 YEAR)



### 3 + 0

#### MALAYSIA

- HELP University

### 2 + 1

#### UNITED KINGDOM

- University College Birmingham

### 1 + 2

#### UNITED KINGDOM

- University of Leeds

## HOSPITALITY & TOURISM

SPM → FOUNDATION IN ARTS (1 YEAR)



### 3 + 0

#### MALAYSIA

- HELP University

### 2 + 1

#### AUSTRALIA

- Griffith University

#### UNITED KINGDOM

- University College of Birmingham

### 1½ + 1½

#### AUSTRALIA

- University of South Australia

### 1 + 2

#### NEW ZEALAND

- University of Otago

### DIRECT ENTRY\*

#### AUSTRALIA

- Flinders University
- University of Technology Sydney

#### UNITED KINGDOM

- University of Essex
- Aberystwyth University
- Northumbria University
- Middlesex University
- York St John University
- University College Birmingham

#### NEW ZEALAND

- University of Canterbury

*\*Direct entry subject to meeting universities' requirements*

## ENGINEERING

(Chemical, Civil, Electrical & Electronic,  
Mechanical, Mechatronic)

SPM → FOUNDATION IN SCIENCE  
(1 YEAR)



### 3 + 0

#### MALAYSIA

- University of Southampton, Malaysia\*  
(4+0, MEng in Mechanical, Electrical & Electronic, Aeronautical & Astronautical)
- AIMST University

### DIRECT ENTRY\*

#### AUSTRALIA

- Monash University
- University of Queensland
- Federation University
- Flinders University
- Macquarie University
- Swinburne University of Technology
- University of Wollongong
- University of Technology Sydney

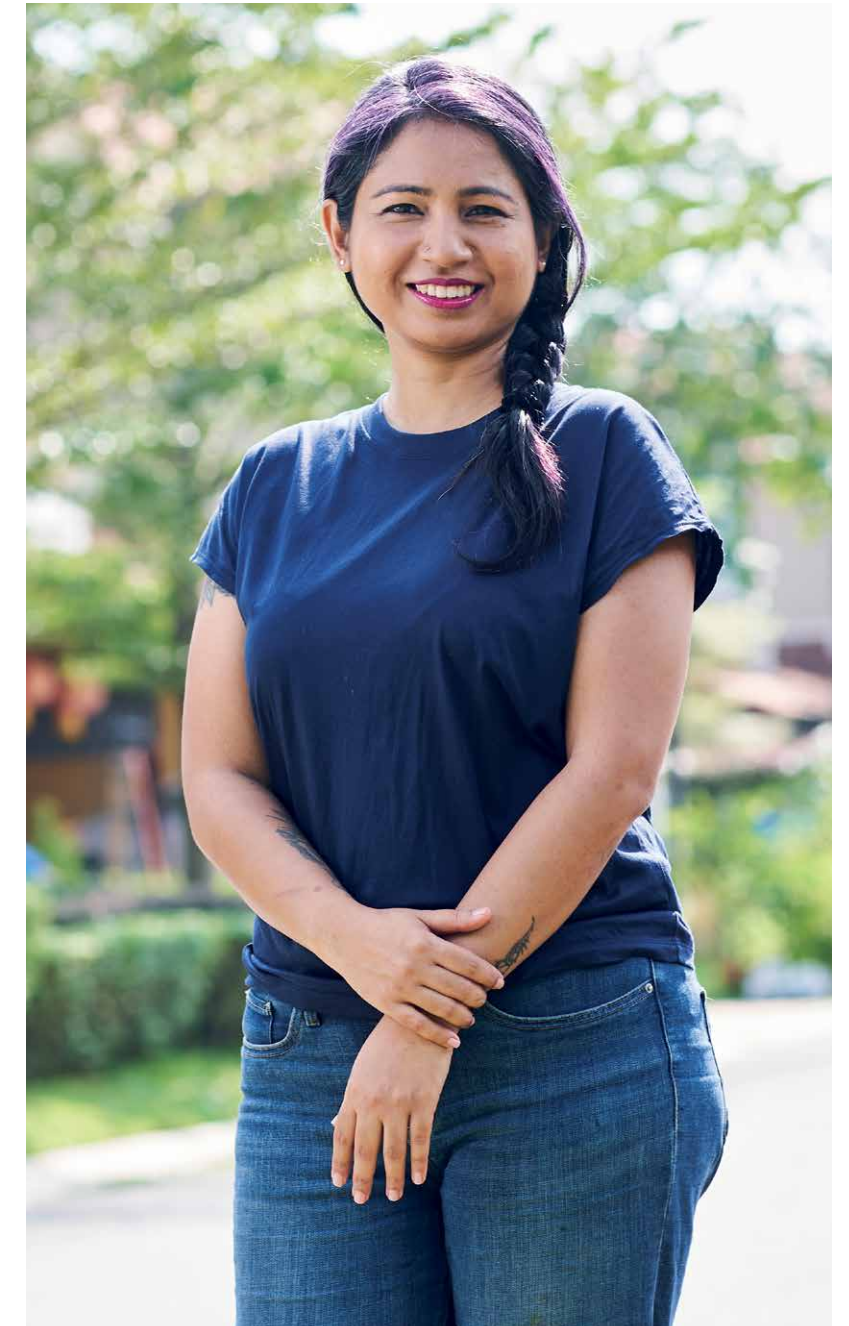
#### NEW ZEALAND

- Massey University
- University of Canterbury

#### UNITED KINGDOM

- University of Leeds
- University of Sheffield
- Queen's University Belfast
- University of Portsmouth
- University of the West of England, Bristol
- Northumbria University
- University of Chester
- Teesside University
- Wrexham Glyndwr University
- INTO University of Exeter
- INTO Glasgow Caledonian University

*\*Direct entry subject to meeting universities' requirements*



“My dream of pursuing a degree in Psychology started with HMC's Foundation in Arts. Its wide array of interesting electives provided a good starting point for my career in Psychology. The experienced and qualified lecturers were both supportive and challenging when necessary. Within the short span of one year, this foundation prepared me well to excel in my graduate and postgraduate academic journey.”

**Sita Lakshmi**

Foundation in Arts - 2010

Bachelor of Psychological Science (Flinders)



## DENTISTRY

SPM → FOUNDATION IN SCIENCE (1 YEAR)

### DIRECT ENTRY\*

#### MALAYSIA

- AIMST University
- Penang International Dental College

## MEDICINE

SPM → FOUNDATION IN SCIENCE (1 YEAR)

### DIRECT ENTRY\*

#### MALAYSIA

- International Medical University (IMU)
- Newcastle University Medicine Malaysia (NUMed)
- RCSI & UCD Malaysian Campus (RUMC)
- AIMST University

#### GRENADE, WEST INDIES

- St George's University

#### RUSSIA

- Moscow Medical Academy
- Volgograd State Medical University

\* Direct entry subject to meeting the universities' requirements

## SCIENCES

(Applied Science, Biomedical, Biotech, Food Science and any science related discipline)

SPM → FOUNDATION IN SCIENCE (1 YEAR)

### DIRECT ENTRY\*

#### MALAYSIA

- International Medical University (IMU)
- Asia Metropolitan University
- AIMST University

#### AUSTRALIA

- Monash University
- University of Queensland

#### UNITED KINGDOM

- University of Bath
- Aston University
- University of Portsmouth

\* Direct entry subject to meeting the universities' requirements

### DIRECT ENTRY\*

#### MALAYSIA

- International Medical University (IMU)
- AIMST University

#### AUSTRALIA

- Monash University
- University of New South Wales
- University of Queensland
- Flinders University
- Macquarie University
- Swinburne University of Technology
- University of Technology Sydney
- University of Wollongong

#### NEW ZEALAND

- University of Canterbury

#### UNITED KINGDOM

- University of Leeds
- University of Sheffield
- University of Essex
- Aberystwyth University
- University of Portsmouth
- University of the West of England, Bristol
- Northumbria University
- University of Chester
- University of Northampton
- Teesside University
- Institute of Technology Carlow, Ireland

\* Direct entry subject to meeting the universities' requirements



## UNIVERSITY RECOGNITION

#### MALAYSIA

- International Medical University (IMU)
- Newcastle University Medicine Malaysia (NUMed)
- RCSI & UCD Malaysian Campus (RUMC)
- Asia Metropolitan University
- AIMST University
- Penang International Dental College

#### AUSTRALIA

- Australian Catholic University
- Bond University
- Deakin University
- Edith Cowan University
- Federation University
- Flinders University
- Macquarie University
- Monash University
- Murdoch University
- Swinburne University of Technology
- University of New South Wales
- University of Queensland
- University of South Australia
- University of Technology Sydney
- University of Wollongong

#### UNITED KINGDOM

- Aberystwyth University
- Anglia Ruskin University
- Aston University
- Bangor University
- Cardiff University
- Hertfordshire University
- Institute of Technology Carlow, Ireland
- INTO Glasgow Caledonian University
- INTO University of East Anglia
- INTO University of Exeter
- INTO University of Glasgow
- INTO University of Manchester (NCUK)
- INTO University of Newcastle
- Leeds Beckett University
- Middlesex University
- Northumbria University
- Nottingham Trent University
- Oxford Brookes University
- Queen's University of Belfast
- Swansea University
- Teesside University
- University College Birmingham
- University of Bath
- University of Chester
- University of Derby
- University of Essex
- University of Leeds

- University of Liverpool
- University of London Programmes
- University of Northampton
- University of Nottingham (Malaysia Campus)
- University of Portsmouth
- University of Sheffield
- University of Southampton (Malaysia Campus)
- University of Surrey
- University of the West of England, Bristol
- Wrexham Glyndwr University
- York St John University

#### NEW ZEALAND

- Massey University
- University of Canterbury
- University of Waikato
- University of Otago

#### UNITED STATES OF AMERICA

- Hawai'i Pacific University

#### GRENADE, WEST INDIES

- St. George's University



## SIGNATURE PROGRAMMES



Community Service



Community Service



Leadership Camp



Leadership Camp



AniHELP

## HMC LEADERSHIP PROGRAMME

One of HMC's strong beliefs is that developing character is just as important as providing an all-rounded and holistic education. True to that belief, HELP Matriculation Center's programme has introduced a leadership camp to nurture the students' character.

At the camp, students are motivated to uplift their sense of self-worth as well as encourage them to acquire important qualities such as self-ownership, effective communication, leadership and teamwork as well as planning and flexibility for future endeavours.

## HMC COMMUNITY SERVICE

Apart from striving for academic excellence, students completing their foundation studies at HMC are required to contribute to society by completing a minimum of 10 hours of community service. By engaging in the volunteer work, they have an opportunity to learn experientially.

Not only does this experience allow students to make more informed choices about college and future career options, it also instils in them a lifelong interest to help others in need.

Spiritual wisdom teaches us that contributing to the greater good results in a more positive outlook towards life. Therefore, we believe the exposure provides students the motivation of having a greater purpose in life.

## STUDENT ACTIVITIES



C2AGE



Student Facilitator Training



Orientation Hangout



End Semester Party



Student Facilitator Training



AniHELP



End Semester Party



C2AGE



## ACADEMIC TEAM



Top (from left):  
Alex, Chandra,  
Dhanesh, Cheau Yann,  
Mohd Fikree

Bottom (from left):  
Murali, Helena

### DEAN

#### DHANESH BALAKRISHNAN

LLB (Hons) (London), LLM (UKM) CLP, MBA (CSturt),  
Certificate in Taxation (HELP)

Dean, Faculty of University Foundation Studies and Senior Lecturer

Dhanesh joined HELP University in 1994 as a Lecturer. He has taught various subjects at the pre-university and the undergraduate level. Dhanesh travels extensively locally and abroad giving talks on holistic education. In addition he conducts seminars for the benefit of teachers. The topics include handling difficult students, teaching and learning, classroom management and leadership in the education sector.

### HEAD OF DEPARTMENT

#### DR MOHD FIKREE BIN HASSAN

BEng (Hons) Electronics major in Telecommunications (MMU),  
MEng (Telecommunications) (UM), PhD (Engineering) (UM)  
Senior Lecturer

Dr Mohd Fikree has comprehensive experience in academia. He has taught mathematics and engineering-related subjects. His research interest is image processing and he has published research articles in international journals. He is currently involved in the coordination and planning of HMC's research and data analytics initiatives.

### DIVISION: DEPARTMENT ACADEMIC BOARD

#### ALEX CHIN YU TUCK

BA Economics & Psychology (Swinburne)  
Senior Lecturer

Alex Chin is the Chairperson of the Department Academic Board which oversees the quality of the courses provided in the department. The purpose of the Department Academic Board is to ensure the highest quality of teaching and assessment is maintained in the department. The Board comprises all academic staff of the department. Alex has been with HELP since 1999 and he teaches Economics and Culture, Arts and Politics at HMC.

### DIVISION: FRANCHISE

#### DR CHANDRA NANTHAKUMAR

BSc (Chem) Hons, MSc (Chem) (USM), CELTA (Cambridge), MEd  
(ELT) (Sheffield), PhD (Natural Health Science – Yoga Therapy) (BIU)  
Senior Lecturer

Chandra Nanthakumar heads the Franchise division in the department. She oversees and coordinates the franchise programmes, which mainly consist of HELP's Foundation and HELP's bridging courses, to various institutions in Asia. With 20 years of teaching experience, mainly in Singapore, Chandra has been a trainer in diverse areas like Public Speaking, Creative Writing, Academic Writing, and Reading Strategies. She not only has a Masters in Chemistry from USM, and a Masters in Education specialising in English Language Teaching from Sheffield (UK), she is also CELTA trained. She is author of books in Chemistry for O-Levels (1999). At HMC, Chandra teaches English and Chemistry. As the advisor of the HELP Yoga Club, she conducts yoga weekly classes for students and staff.

### DIVISION: EVENTS AND PROJECT MANAGEMENT

#### R MURALI RAJARATENAM

BSc (Microbiology) Hons, MESL (Malaya)  
Senior Lecturer

The aim of the division is to provide students with the fundamentals of event management as a pervasive, fully developed field of activity in today's society and global economy. The division employs a practical approach whereby the process, strategies and tactics are applied in the major areas of organising a successful event. Formerly a journalist with the New Straits Times and with over 5 years' experience in corporate communications, R Murali has championed events such as the 24-hour charity Dance Marathon, Pack the floor for 24, Cosplay, Comics, Anime & Games Exhibition (C2AGE), Animals & HELP (AniHELP) and the Driving is a No Phone Zone Campaign.

### DIVISION: QUALITY ASSURANCE

#### LIM CHEAU YANN

BSc (Econs) Hons, MPA (Pub Policy) (Malaya)  
Senior Lecturer

The Quality Assurance Division aims to maintain the integrity of proper documentation at the departmental level. As the division head, Lim Cheau Yann takes care of HMC's documents for internal regulatory processes such as audits, moderation exercises and licence renewals. The division coordinates and collaborates with the Departmental Academic Board (DAB) in ensuring the documents are regularly updated and are in line with the requirements of Malaysian Qualifications Agency (MQA) and the Ministry of Education (MOE).

### DIVISION: PERSONAL DEVELOPMENT AND LEADERSHIP

#### HELENA MICHAEL

BA Psychology (cum laude), BSec Education (cum laude) (De La Salle),  
MAppPsy in Coaching (HELP)  
Senior Lecturer

The Personal Development and Leadership Centre aims to develop and build personal leadership among students. Helena hopes to help students to be aware of who they are and how best to live their lives. Helena has more than 10 years' experience as youth worker, providing young people with the necessary tools to discover their talents and realise their potential. Helena is a certified professional coach. She has a Masters in Applied Psychology from HELP University.



**DHARMINDER SINGH**  
BA Hons (English) (UPM),  
MAppPsy in Coaching (HELP),  
Certified Professional Coach  
(ICF), Certified HRDF Trainer  
(TTT)  
Senior Lecturer



**IRMA HERAWATI**  
BA (Eng Lit) (Tennessee),  
TESL (American Associate  
Degree)  
Senior Lecturer



**ISKANDAR DZULKARNAIN  
AHMAD JUNID**  
BA (English Lang & Lit) Hons  
(IIUM), MPAdmin (UM)  
Senior Lecturer



**MELISA AMOS**  
BSc (Industrial Math) (UTM)  
Senior Lecturer



**MOHD NAJMUDDIN BIN SUKI**  
BCompSc (Software Engr)  
Hons (Malaya)  
Senior Lecturer



**NELSON TEE LOONG SOON**  
BSc (Comp Maths) (UMT),  
MSc (Math Sciences) (UMT)  
Senior Lecturer



**NG YOU MING**  
BForestry Sc (First Class Hons)  
MSc (Youth Studies) (UPM)  
Senior Lecturer



**SANGEETA S MURTHY**  
BSc Biotechnology (Monash)  
MBiotech (Malaya)  
Senior Lecturer



**SELINA NALINI RICHARDS**  
BA (Eng Lit & Indo/Malay  
Studies) Hons (Monash),  
BSc (Psych) (cum laude) (Upper  
Iowa), MCouns (HELP)  
Senior Lecturer



**SIVA SUBRAMANIAM A/L  
NADESAN**  
BSc Hons Comp & Inf Systems  
(Oxford Brookes), NCC  
International Diploma in  
Computer Studies (NCC, UK),  
MSc (Distinction) Technology  
Management (Staffordshire)  
Senior Lecturer



**SYAFIQ AMRI**  
BA (Linguistics & Lit) Hons,  
MA (English Literary  
Studies) (IIUM)  
Senior Lecturer



**WILLIAM GUALBERT QUAH  
SIEW BENG**  
BBA (Bus Econ),  
MBA (Mk/Int Bus) (San  
Diego)  
Senior Lecturer



**WINNIE LEONG WAI LING**  
BBus (Info Sys) (Swinburne)  
Senior Lecturer



**YU MAY LEEN**  
BSc Computing  
(Oxford Brookes),  
MSc (Comp Sc) (Malaya)  
Senior Lecturer



**AARON HONG KAI JEAT**  
BSc (Physics) Hons (UTAR)  
Lecturer



**AYESWARY SIVARAJAH**  
BA TESL (HELP),  
Master in Cross-cultural  
Communication and  
Applied Linguistics  
(Newcastle), CELTA  
certificate  
Lecturer



**CHAN JIN-VEI**  
BLang and Linguistics  
(English) (Malaya),  
MA (Linguistics) (Malaya)  
Lecturer



**DR DALWINDER KAUR**  
BEd TEYL (Hons) (UUM),  
PhD (Curriculum and  
Instructional Technology)  
(Malaya)  
Lecturer



**DEVARAJ KANAGARAJOO**  
BHosp and Tourism Mgmt  
(Hons) (Taylors)  
Lecturer



**KANNAN S/O SHANMUGAM**  
Dip Acct, BFinance (Hons)  
(UUM), MSc (Finance)  
(UUM)  
Lecturer



**KAVITHA V. GOKULACHANDRAN**  
BSc (Psychology)  
(Upper Iowa),  
MA (Educational Leadership)  
(Nottingham), CELTA  
Lecturer



**LISHA A/P BHASKARAN**  
BPsych Hons (HELP)  
Lecturer



**MUHAMMAD EILHAM BIN M.  
OSMAN**  
BSc Hons (UiTM),  
MSc (Physics)(UKM)  
Lecturer



**NICHOLAS TEH SEK KIT**  
BCompSc (Inf Sys)  
Hons (MMU)  
Lecturer



**SHARMILA BINTI SIVADASAN**  
BEd TESL, MESL (Malaya)  
Lecturer



**PAK WEI-HAN**  
BSc Psych, MSc Political Psych  
(Queen's Belfast)  
Lecturer



**SAMANTHA GOH YEAN MEE**  
BSc (Actuarial Sc) (UKM),  
MAppStat (Malaya)  
Lecturer



**THEVARANI LINGAM**  
BSc (Stats) Hons,  
MA (AppStats) (Malaya)  
Lecturer



**VINCENT PAUL JORDAN  
RODERIQUEZ**  
BA (Hons) (English  
Lang & Comm (UCSI)  
Lecturer



**WILLIAM YEO KIM HONG**  
BSc (App Math/Comp) Hons (UTAR)  
Lecturer



**YOW HUN YEN**  
BA (English Lit) Hons (UKM),  
MEnglish Studies (Sydney)  
Lecturer



## A DAY IN HELP SUBANG 2

Life in HELP is more than studies and exams. We are a lively and enriching community, offering a diverse range of fun activities and events, and top notch facilities.



7.30AM

Start a new day by preparing for your classes at the open access computer laboratories in the library.



8.00AM

Attend your first class of the day in one of the many classrooms and lecture halls.



4.30PM

Take a break and challenge your friends to a game of pool or hang out in the spacious student lounge.



12.00PM

Grab a tasty lunch or treat yourself to a coffee under the green boughs in the gardens.



1.00PM

Got a question? Have a chat with the education advisors at the Customer Marketing Department.



5.00PM

Take a dip in the swimming pool or break a sweat in the football field or tennis court.



1.30PM

Attend a talk by one of our many guest lecturers in our spacious multi-purpose hall.



3.00PM

Check in to the library to recharge yourself with a quick nap or read in the naturally lighted spaces.



6.30PM

Worried about the rain? Well, you can always get active with some sporting activities in our indoor hall.



8.00PM

Wind down and chill or catch up with your studies before the library closes at 9.30pm.





[www.help.edu.my](http://www.help.edu.my)



[facebook.com/HELPUniversity](https://facebook.com/HELPUniversity)



[twitter.com/HELPUni](https://twitter.com/HELPUni)



[instagram.com/help\\_uni](https://instagram.com/help_uni)

**HELP University Sdn Bhd** Registration No. : 198201005211 (84963-D)

No. 15, Jalan Sri Semantan 1, Off Jalan Semantan, Bukit Damansara, 50490 Kuala Lumpur.

Tel: 03-2716 2000 Email: [marketing@help.edu.my](mailto:marketing@help.edu.my)